

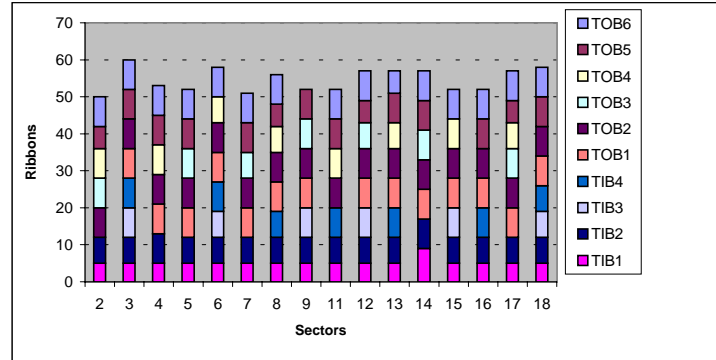
	Rods	APVs	Fibres / Rod	Fibres	Ribbons Needed / Layer
TOB6	74	36	18	1332	111
TOB5	66	36	18	1188	99
TOB4	60	48	12	720	60
TOB3	54	24	12	648	54
TOB2	48	60	30	1440	120
TOB1	42	60	30	1260	105
TIB4	54	24	12	648	54
TIB3	46	24	12	552	46
TIB2	38	72	36	1368	114
TIB1	28	72	36	1008	84

AVG: 54.63
Devstd 3.138

	Ribbons / SECTOR																		Ribbons Used / Layer
	2	3	4	5	6	7	8	9	11	12	13	14	15	16	17	18			
TOB6	8	8	8	8	8	8	8	0	8	8	6	8	8	8	8	8	8	118	
TOB5	6	8	8	8	0	8	6	8	8	6	8	8	0	8	6	8	104		
TOB4	8	0	8	0	7	0	7	0	8	0	7	0	8	0	7	0	60		
TOB3	8	0	0	8	0	7	0	8	0	7	0	8	0	0	8	0	54		
TOB2	8	8	8	8	8	8	8	8	8	8	8	8	8	8	8	8	128		
TOB1	0	8	8	8	8	8	8	8	0	8	8	8	8	8	8	8	112		
TIB4	0	8	0	0	8	0	7	0	8	0	8	0	8	0	8	0	54		
TIB3	0	8	0	0	7	0	0	8	0	8	0	8	0	0	8	0	46		
TIB2	7	7	8	7	7	7	7	7	7	7	7	8	7	7	7	7	114		
TIB1	5	5	5	5	5	5	5	5	5	5	5	9	5	5	5	5	84		
	50	60	53	52	58	51	56	52	52	57	57	57	52	52	57	58	874		

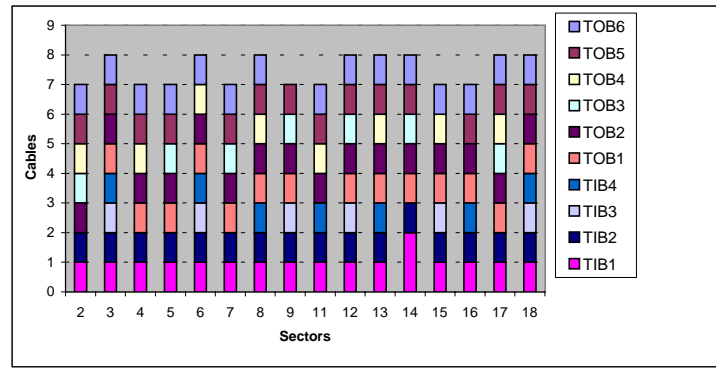
	FEDs					
	Full FED			Non-Full FED		
	#	Ribbons / FED	Spare fibres	#	Ribbons / FED	Spare fibres
TOB6	14	8	84	1	6	24
TOB5	10	8	60	4	6	96
TOB4	4	8	0	4	7	48
TOB3	5	8	0	2	7	24
TOB2	16	8	96	0	0	0
TOB1	14	8	84	0	0	0
TIB4	5	8	0	2	7	24
TIB3	4	8	0	2	7	24
TIB2	2	8	0	14	7	168
TIB1	0	8	0	17	2x4 + 15x5	624
	74		324	46		1032

	Spare Fibres / SECTOR																		Spare Fibres
	2	3	4	5	6	7	8	9	11	12	13	14	15	16	17	18			
TOB6	6	6	6	6	6	6	6	0	6	6	0	6	6	6	6	6	84		
TOB5	0	6	6	6	0	6	0	6	6	0	6	6	0	6	0	6	60		
TOB4	0	0	0	0	0	0	0	0	0	0	0	0	0	0	0	0	0		
TOB3	0	0	0	0	0	0	0	0	0	0	0	0	0	0	0	0	0		
TOB2	6	6	6	6	6	6	6	6	6	6	6	6	6	6	6	6	96		
TOB1	0	6	6	6	6	6	6	6	0	6	6	6	6	6	6	6	84		
TIB4	0	0	0	0	0	0	0	0	0	0	0	0	0	0	0	0	0		
TIB3	0	0	0	0	0	0	0	0	0	0	0	0	0	0	0	0	0		
TIB2	0	0	0	0	0	0	0	0	0	0	0	0	0	0	0	0	0		
TIB1	0	0	0	0	0	0	0	0	0	0	0	0	0	0	0	0	0		
	12	24	24	24	18	24	18	18	18	18	18	24	18	24	18	24	324		



Cassettes needed >>>> 2 2 2 2 2 2 2 2 2 2 2 2 2 2 2 2 2 2 32
(Max 4)

	96-fibres Cable / SECTOR																		Cables
	2	3	4	5	6	7	8	9	11	12	13	14	15	16	17	18			
TOB6	1	1	1	1	1	1	1	0	1	1	1	1	1	1	1	1	15		
TOB5	1	1	1	1	0	1	1	1	1	1	1	1	0	1	1	1	14		
TOB4	1	0	1	0	1	0	1	0	1	0	1	0	1	0	1	0	8		
TOB3	1	0	0	1	0	1	0	1	0	1	0	1	0	0	1	0	7		
TOB2	1	1	1	1	1	1	1	1	1	1	1	1	1	1	1	1	16		
TOB1	0	1	1	1	1	1	1	1	0	1	1	1	1	1	1	1	14		
TIB4	0	1	0	0	1	0	1	0	1	0	1	0	0	1	0	1	7		
TIB3	0	1	0	0	1	0	0	1	0	1	0	0	1	0	0	1	6		
TIB2	1	1	1	1	1	1	1	1	1	1	1	1	1	1	1	1	16		
TIB1	1	1	1	1	1	1	1	1	1	1	1	2	1	1	1	1	17		
	7	8	7	7	8	7	8	7	7	8	8	8	7	7	8	8	120		



	SPARE Ribbons / SECTOR																		Spare Ribbons
	2	3	4	5	6	7	8	9	11	12	13	14	15	16	17	18			
TOB6	0	0	0	0	0	0	0	0	0	0	2	0	0	0	0	0	2		
TOB5	2	0	0	0	0	0	2	0	0	2	0	0	0	0	2	0	8		
TOB4	0	0	0	0	1	0	1	0	0	0	1	0	0	0	1	0	4		
TOB3	0	0	0	0	0	1	0	0	0	1	0	0	0	0	0	0	2		
TOB2	0	0	0	0	0	0	0	0	0	0	0	0	0	0	0	0	0		
TOB1	0	0	0	0	0	0	0	0	0	0	0	0	0	0	0	0	0		
TIB4	0	0	0	0	0	0	1	0	0	0	0	0	0	0	0	1	2		
TIB3	0	0	0	0	1	0	0	0	0	0	0	0	0	0	0	1	2		
TIB2	1	1	0	1	1	1	1	1	1	1	1	0	1	1	1	1	14		
TIB1	3	3	3	3	3	3	3	3	3	3	3	7	3	3	3	3	52		
	6	4	3	4	6	5	8	4	4	7	7	7	4	4	7	6	86		

	TOT SPARE Fibres / SECTOR																		TOT SPARE Fibres
	2	3	4	5	6	7	8	9	11	12	13	14	15	16	17	18			
TOB6	6	6	6	6	6	6	6	0	6	6	24	6	6	6	6	6	108		
TOB5	24	6	6	6	0	6	24	6	6	24	6	6	0	6	24	6	156		
TOB4	0	0	0	0	12	0	12	0	0	0	12	0	0	0	12	0	48		
TOB3	0	0	0	0	0	12	0	0	0	0	12	0	0	0	0	0	24		
TOB2	6	6	6	6	6	6	6	6	6	6	6	6	6	6	6	6	96		
TOB1	0	6	6	6	6	6	6	6	0	6	6	6	6	6	6	6	84		
TIB4	0	0	0	0	0	0	12	0	0	0	0	0	0	0	0	12	24		
TIB3	0	0	0	0	12	0	0	0	0	0	0	0	0	0	0	12	24		
TIB2	12	12	0	12	12	12	12	12	12	12	12	0	12	12	12	12	168		
TIB1	36	36	36	36	36	36	36	36	36	36	36	84	36	36	36	36	624		
	84	72	60	72	90	84	114	66	66	102	102	108	66	72	102	96	1356		