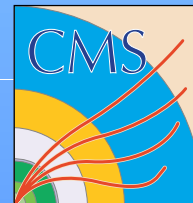
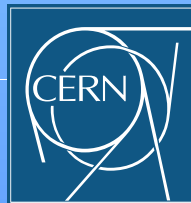
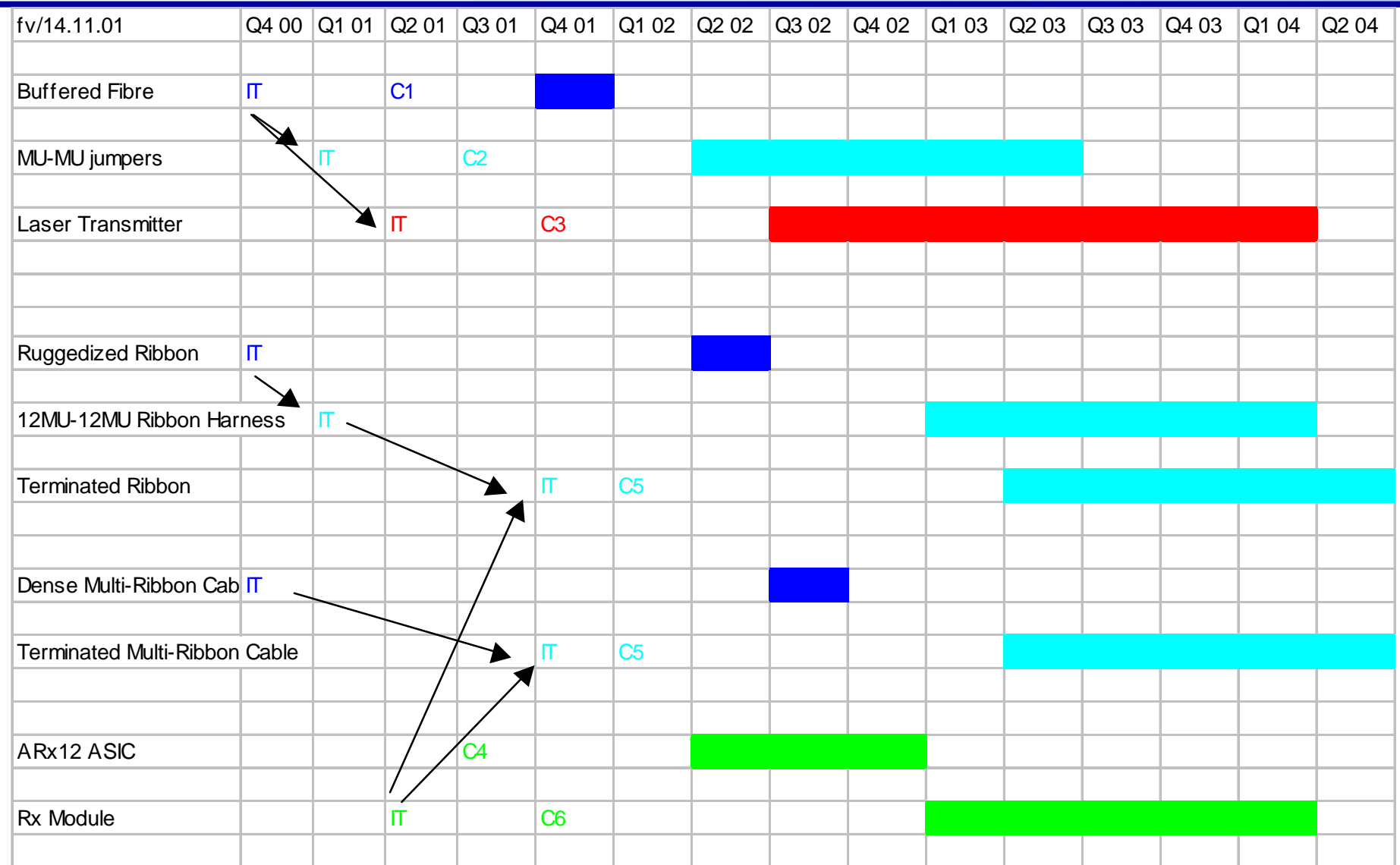


# *Conclusions*

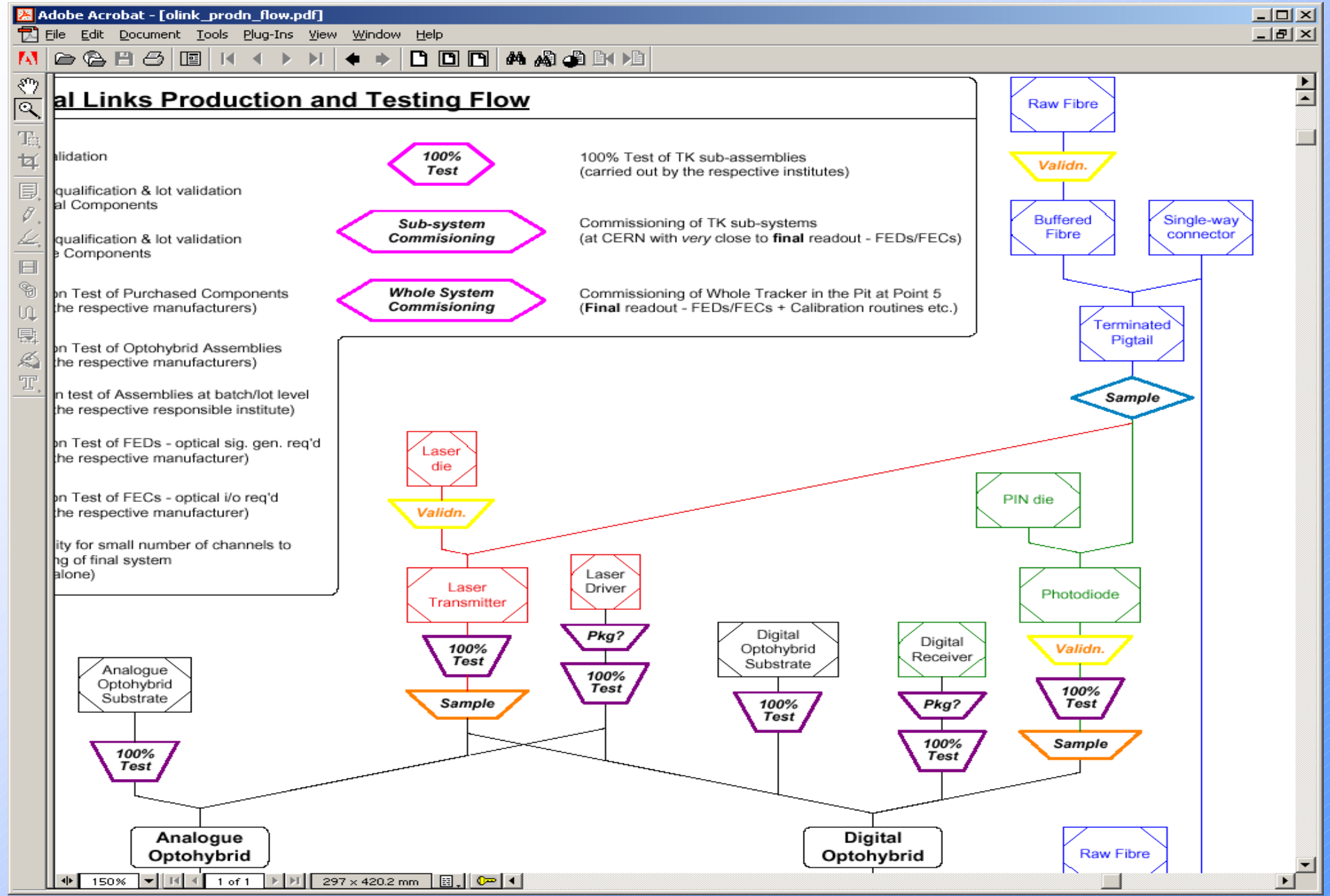
- Tracker Optical Link is ready for Production
  - Technology, Architecture and Specs are frozen
  - Functionality (A and D) is demonstrated
  - Manufacturability is established
  - QA Strategy is defined
  - Cost is (almost) firm, includes purchase options
- Result of large effort
  - Time (R+D, Tendering)
  - Resources (incl. RD23 generic effort)
- Production launch is dependent on administrative actions and suppliers lead-time



# Production Schedule




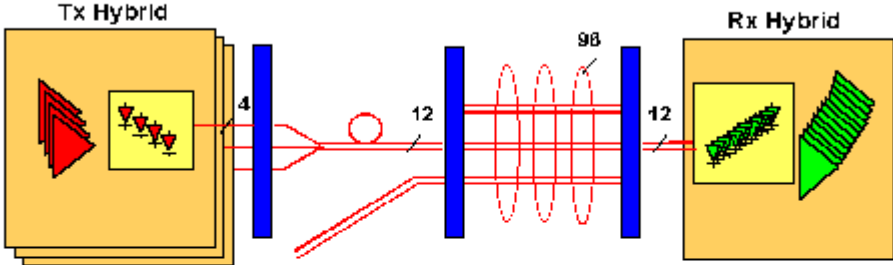
# Production Flow



# More Information

<http://cms-tk-opto.web.cern.ch/>

**Tracker Optical Links** 

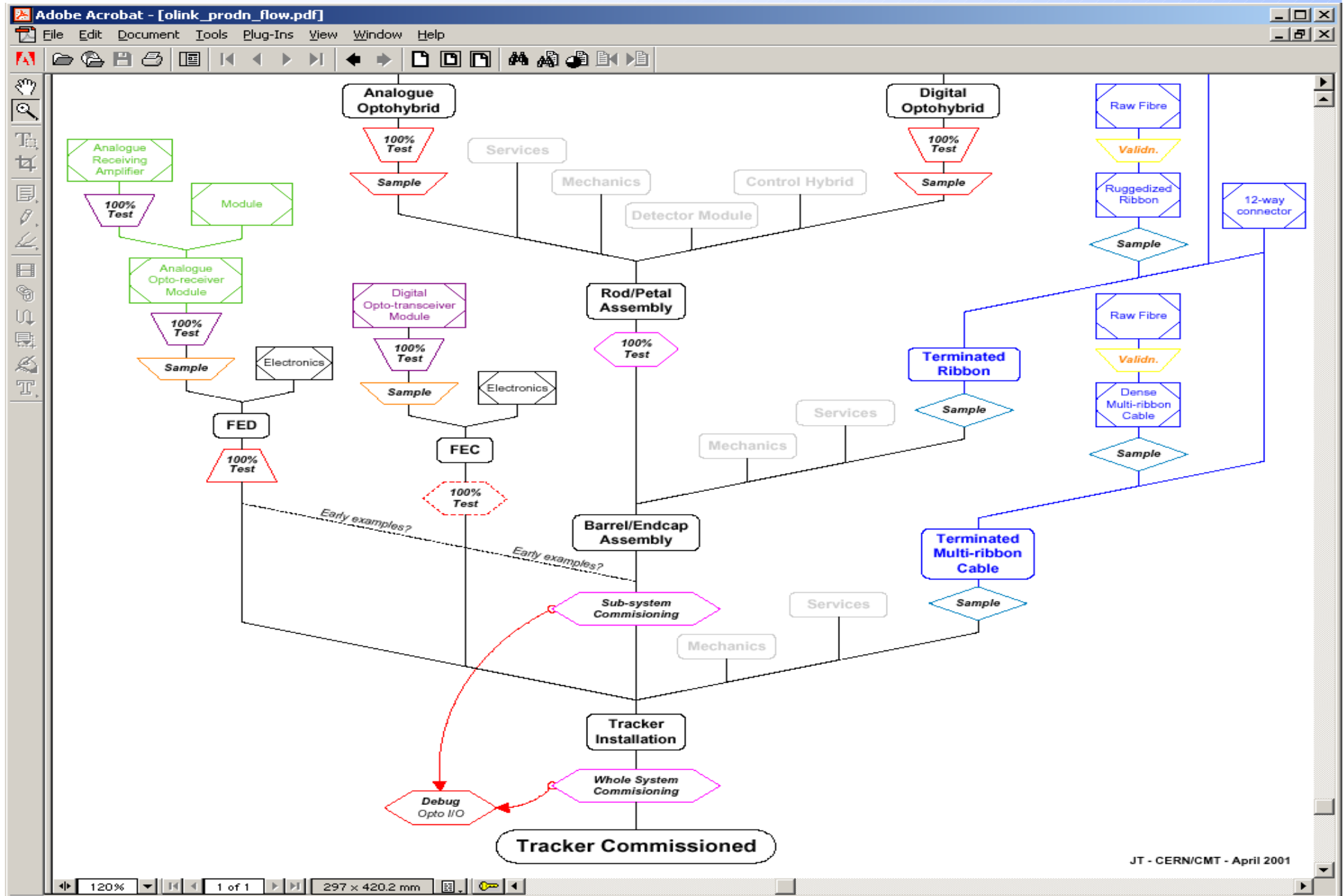


click on image to see components

<p><b>General</b></p> <ul style="list-style-type: none"><li><a href="#">Project Description</a></li><li><a href="#">Posters &amp; presentations</a></li><li><a href="#">Images of links/components</a></li><li><a href="#">Related topics</a></li></ul>	<p><b>News</b></p> <ul style="list-style-type: none"><li><a href="#">Laser Safety</a></li><li><a href="#">Research Opportunities</a></li><li><a href="#">Prototype link users</a></li></ul>	<p><b>Documents</b></p> <ul style="list-style-type: none"><li><a href="#">Publications, User manuals</a></li><li><a href="#">QA, PRR</a></li><li><a href="#">Specifications</a></li><li><a href="#">Market surveys</a></li></ul>
---	---	--

Last modified by [JT](#): Mon, 22-Oct-2001 9:26

# Production Flow (2)



# Production Launch

