

**ORGANISATION EUROPEENNE POUR LA RECHERCHE NUCLEAIRE
EUROPEAN ORGANIZATION FOR NUCLEAR RESEARCH**

Laboratoire Européen pour la Physique des Particules
European Laboratory for Particle Physics

CMS Tracker Optical Control Link Specification

Part 5: Back-end Opto-transceiver Module

Version 1.5, 9th April 2003.

CERN EP/CME

Preliminary

1. INTRODUCTION	2
1.1. GENERAL SYSTEM DESCRIPTION.....	2
1.2. DOCUMENT STRUCTURE AND CONVENTION.....	3
1.3. RELATED WWW SITES.....	4
1.4. DOCUMENT HISTORY.....	4
1.5. CONTACTS.....	4
2. TECHNICAL REQUIREMENT, PART 5: BACK-END OPTO-TRANSCIEVER MODULE	5
2.1. DESCRIPTION.....	5
2.2. BLOCK DIAGRAM.....	5
2.3. TARGET SPECIFICATIONS (@25°C UNLESS OTHERWISE NOTED).....	6
2.4. OPERATING ENVIRONMENT.....	8
2.5. OTHER CHARACTERISTICS.....	9
2.6. TESTING (PRELIMINARY).....	10
3. GLOSSARY	11
3.1. SKEW.....	11
3.2. JITTER.....	11
3.3. OUTPUT SIGNAL AMPLITUDE, SPECIFIED MINIMUM LEVELS.....	11
4. REFERENCES	12

1. Introduction

1.1. General system description

This specification defines the design requirements for the digital optical link to be used in the control system of the various sub-detectors of the CMS detector [1.1] at the CERN [1.2] Large Hadron Collider (LHC). The system architecture is based on the token ring concept, with mixed optical and copper sections [1.3]. The system was originally developed for the Tracker subdetector [1.4], where the total number of redundant control rings is 320, corresponding to 2560 optical link channels. In the other subsystems, namely ECAL, preshower and pixels, the combined total number of digital links required is expected to be a similar to that for the Tracker.

The CMS optical control link is embedded into the control ring, as shown in Fig 1.1 taking the Tracker system as an example. The optical link is highlighted on the left of the figure, starting and ending at the backend transceiver module which is mounted on the Front End Controller board (FEC). Specifications for the FEC, and communication control unit (CCU) ASICs can be found in [1.5] and [1.6] respectively.

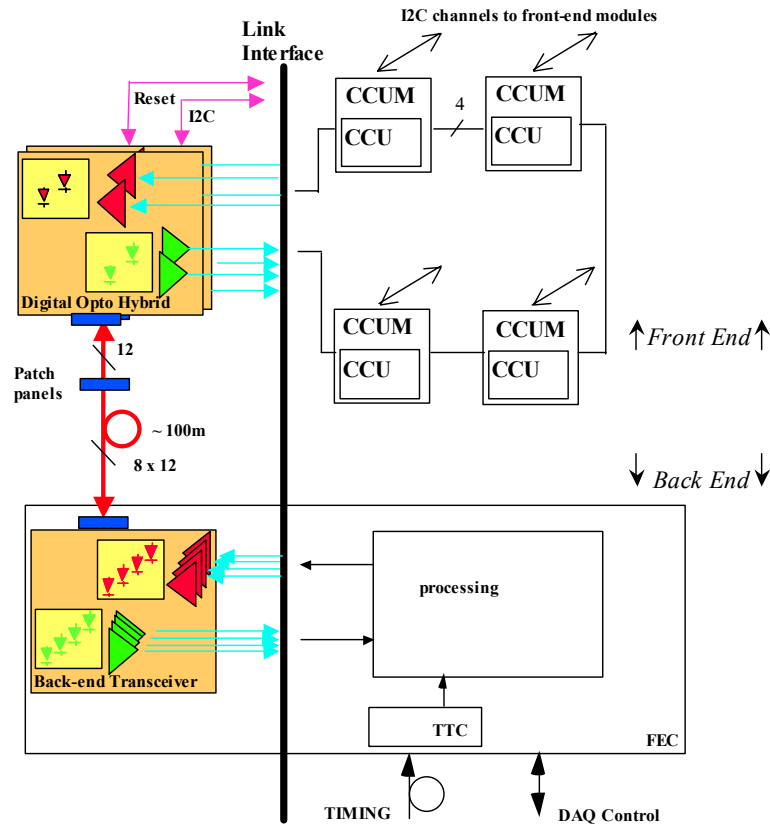


Fig. 1.1. Tracker control ring with optical link highlighted on the left.

The communication architecture proposed to control the embedded electronics is based on two layers. A more detailed description can be found for instance in [1.3]. The first layer (called the Ring) connects the FEC to the CCU modules (CCUMs) as well as connecting between CCUMs on the same ring. The protocol on this first layer is message-based and is implemented in a way similar to LAN networks. Four lines are required to transmit data (40Mb/s) and system clock (40MHz) with redundancy. Optical links are used to transmit data between the back-end (FEC) and the front-end digital optohybrid (DOH). The data is then communicated between CCUMs via electrical interconnections. The second layer of communication, between the CCUMs and the front-end chips, is entirely electrical and is based on the I²C standard protocol.

1.2. Document structure and convention

The optical link specification is broken down into eight independent parts, each describing and specifying a different level or function in the system:

- Part 1. System
- Part 2. Digital Opto-Hybrid
 - 2.1 Laser Driver ASIC
 - 2.2 Laser Transmitter
 - 2.2.1 Terminated Pigtail
 - 2.2.1.1 Buffered Fibre
 - 2.3 PIN Photodiode
 - 2.4 Digital Receiver ASIC
 - 2.5 Digital Optohybrid Substrate
- Part 3. Terminated Fibre Ribbon
 - 3.1 Ruggedized Ribbon Harness
 - 3.1.1 Ruggedized Ribbon
- Part 4. Terminated Multi-Ribbon Cable
 - 4.1 Dense Multi-Ribbon Cable
- Part 5. Back-End Opto-Transceiver Module
- Part 6. Distributed Patch Panel
 - 6.1 MU-sMU Adaptor
- Part 7. In Line Patch Panel
 - 7.1 MFS Adaptor
- Part 8. Backend Patch Panel
 - 8.1 Connector Shell

Each part has the following structure:

- | | | | |
|-------------------------|----------------------------|-------------|---------------|
| 1. Introduction | 2. Technical requirement | 3. Glossary | 4. References |
| 1.1. System description | 2.1. description | | |
| 1.2. Document structure | 2.2. block diagram | | |
| 1.3. Related WWW sites | 2.3. specification | | |
| 1.4. Contact | 2.4. operating environment | | |
| 1.5. Document history | 2.5. other characteristics | | |
| | 2.6. testing | | |
| | 2.7. implementation | | |

Due to the preliminary nature of this document, the specification section (section 2.3) of each system part is labelled "target specifications". CERN should be consulted before any hardware or software relying on these characteristics is being designed. Target specifications will eventually evolve into full specifications once the system definition is mature. Parameters still to be determined are labelled TBD.

1.3. Related WWW sites

- CERN laboratory: <http://www.cern.ch/Public/>
- CMS project: <http://cmsinfo.cern.ch/Welcome.html>
- CMS Tracker Technical Design Report: <http://cmsdoc.cern.ch/ftp/TDR/TRACKER/tracker.html>
- CMS Tracker Electronic System: <http://cmstrackercontrol.web.cern.ch/CMSTrackerControl/docmain.htm>
- CMS Tracker Optical Links: <http://cms-tk-opto.web.cern.ch/>
- FED developments: http://www.te.rl.ac.uk/esdg/cms_fed_pmc/index.html
- APV and MUX developments: <http://www.te.rl.ac.uk/med/>

1.4. Document history

Rev. 1.0, 22/10/02	Draft (KG)
Rev. 1.1, 17/12/02	Changed Rx saturation spec to -4dBm (KG)
Rev. 1.2, 21/1/03	Minor changes to input signal voltage ranges (KG)
Rev. 1.3, 7/3/03	Added 1k Ω external termination of output (KG). Added comment regarding 7dB max variation of OMA input to receiver channels (KG)
Rev. 1.4, 25/3/03	Modified 7dB comment back to 5dB (FV)
Rev. 1.5, 9/4/03	Modified points and figures related to external output termination (KG)

1.5. Contacts

All questions regarding this document should be addressed to:

F. Vasey
EP Division
CERN
CH-1211 Geneva 23

Fax: +41 22 767 2800
Phone +41 22 767 3885
E-mail francois.vasey@cern.ch

K. Gill
EP Division
CERN
CH-1211 Geneva 23

Fax: +41 22 767 2800
Phone +41 22 767 8583
E-mail karl.gill@cern.ch

2. Technical requirement, part 5: back-end opto-transceiver module

2.1. Description

At the back-end of the digital control links 4+4 way transceiver modules, each having a 12-way MPO optical interface, will be mounted on the Front-end Controller (FEC) cards.

2.2. Block diagram

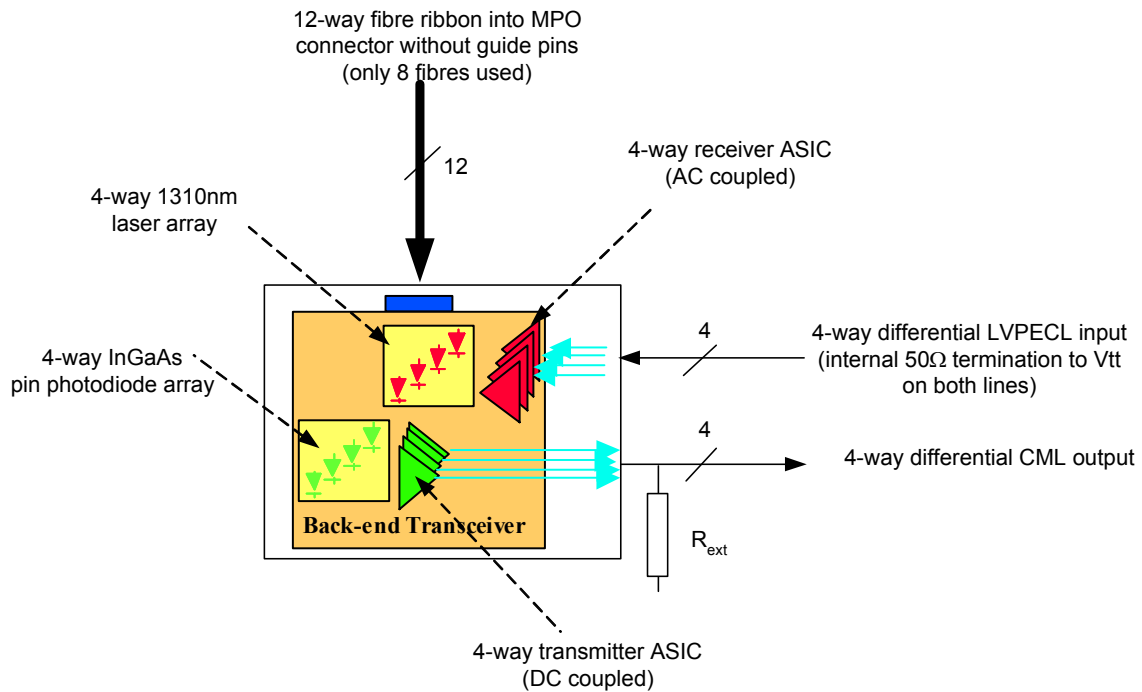


Fig. 2.1. Backend transceiver block diagram

2.3. Target Specifications (@25°C unless otherwise noted)

#	Operational specifications	min	typ	max	unit	note
5.1	Bit Rate	2		80	Mb/s	Balanced code
5.2	Bit error rate			10^{-12}		Under condition that uniformity of optical signal amplitudes into all four receiver channels is ≤ 5 dB.
5.3	Skew			1	ns	Between any 2 fibres coming from the same module, see glossary 3.1
5.4	Jitter			0.25	ns	rms, see glossary 3.2 (TBD)
5.5	Operation rate		4000		hrs/year	Total lifetime 10 years
	specs 5.6 to 5.10					reserved for future use

#	Physical specifications	min	typ	max	unit	note
5.11	Number of Tx channels	4				Fibre channel assignment TBD
5.12	Number of Rx channels	4				Fibre channel assignment TBD
5.13	Module size	40 x 35 x 10			mm	TBD
5.14	Module type	surface mount component				Solder reflowable.
	specs 5.15 to 5.20					reserved for future use

#	electrical specifications	min	typ	max	unit	note
5.21	Differential input voltage	± 400	± 600		mV	LVPECL
5.22	Input impedance		100		Ω	Both inputs terminated internally with 50Ω to V_{tt}
5.23	Differential output voltage		± 600		mV	CML, amplitude depends upon external termination, see glossary 3.3.
5.24	Output impedance		100		Ω	Both outputs terminated internally with 100Ω to V_{cc}
5.25	Power supply	3.1	3.3	3.5	V	
5.26	Power dissipation			2	W	Tx and Rx channels
	specs 5.27 to 5.30					reserved for future use

#	optical specifications	min	typ	max	unit	note
5.31	Wavelength	1260	1310	1360	nm	Over temperature range
5.32	Average launch power	-13		-3	dBm	Over temperature range
5.33	Optical modulation amplitude	-12		-3	dBm	Over temperature range
5.34	Rx sensitivity			-20	dBm	Over temperature range
5.35	Rx saturation	-4			dBm	Maximum average input power.
5.36	Optical connector	MPO				Angle-polished single-mode, without guide pins

	specs 5.37 to 5.50					reserved for future use
--	--------------------	--	--	--	--	-------------------------

2.4. Operating environment

#	environmental specifications	min	typ	max	unit	note
5.51	Operating temperature	0		70	°C	
5.51	Operating humidity			60	% RH	
5.52	Storage temperature	-20		70	°C	
5.53	Reflow Temperature			260	°C	30 seconds, 3 cycles
	Specs 5.54 to 5.60					reserved for future use

#	safety specifications		note
5.61	Optical	laser class 1	IEC 825-1
5.62	Fire	CERN standards for underground equipment	CERN IS23 and IS41, see reference [2.2].
	specs 5.63 to 5.69		reserved for future use

2.5. Other characteristics

- electrical interface:

Surface mount leadframe, to be soldered on FEC board.
External termination resistors on output lines.

- optical interface:

MPO-12 connector receptacle, angle polished single-mode without guide pins.

- exchange of test and traceability documentation:

Excell file on CD-ROM or sent by e-mail.

- shipping and storage requirements:

Shipping in 8-module trays, storage according to best practice.

- TRx module mounting and handling requirements:

Hermetically sealed modules.
Modules to be handled with standard ESD precautions.
Soldering conditions: Max. 260°C during 30s 3 times

- TRx cooling recommendations:

Forced air cooling, 3m/s.

- labelling:

Human readable S/N on lid. Should also include laser safety Class 1 label.

2.6. Testing (Preliminary)

#	Specification to be tested	Manufacturer	CERN	
		Test Data	Pre-production Qualification	Lot Acceptance
		TBD		
5.1	Bit Rate		◆	◆
5.2	Bit error rate		◆	◆ (TBD)
5.3	Skew		◆	◆
5.4	Jitter		◆	◆
5.5	Operation rate			
5.11	Number of Tx channels		◆	◆
5.12	Number of Rx channels		◆	◆
5.13	Module size		◆	◆
5.21	Differential input voltage		◆	◆
5.22	Input impedance		◆	
5.23	Differential output voltage		◆	◆
5.24	Output impedance			
5.25	Power supply		◆	
5.26	Power dissipation		◆	◆
5.31	Wavelength		◆	◆
5.32	Average launch power		◆	◆
5.33	Signal modulation		◆	◆
5.34	Rx sensitivity		◆	◆
5.35	Rx saturation		◆	◆
5.36	Optical connector		◆	◆
5.51	Operating temperature		◆	
5.52	Operating humidity			
5.53	Storage temperature			
5.54	Reflow Temperature		◆	
5.61	Optical safety class			
5.62	Fire hazard			
	Other tests	TBD	TBD	TBD

3. Glossary

3.1. Skew

The skew is determined by measuring, for two channels, the average time $\overline{t_{50}}$ required for a step response signal to reach 50% of its end value. The skew between channels i and j is defined as:

$$t_{\text{skew}} = \overline{t_{50,j}} - \overline{t_{50,i}}$$

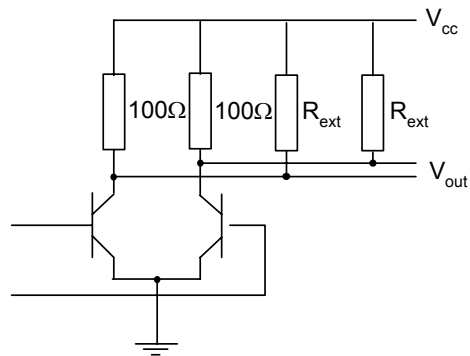
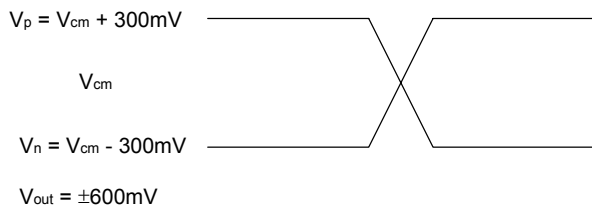
3.2. Jitter

The rms jitter is defined as the rms deviation of the time t_{50} required for a step response signal to reach 50% of its end value:

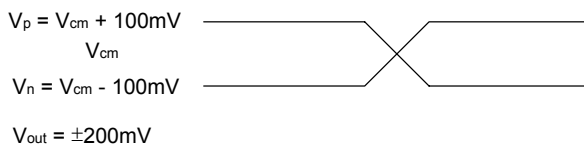
$$t_{\text{jitter}} = \sqrt{\overline{(t_{50} - \overline{t_{50}})^2}}$$

3.3. Output signal amplitude, specified minimum levels

(a) Without external output termination $R_{\text{ext}} = \infty$



(b) With $R_{\text{ext}} = 50\Omega$ external output termination (for module testing)



4. References

- [1.1] <http://cmsinfo.cern.ch/cmsinfo/Welcome.html>
 - [1.2] <http://www.cern.ch/>
 - [1.3] A. Marchioro, " Specifications for the Control Electronics of the CMS Inner Tracker", Draft V2, CERN
 - [1.4] The tracker project, technical design report, CERN/LHCC 98-6, CMS TDR 5
 - [1.5] A. Marchioro, "FEC specification", Draft, CERN
 - [1.6] A. Marchioro, "CCU specification", Draft, CERN
-
- [2.1] M. Huhtinen, "Studies of neutron moderator configurations around the CMS inner tracker and Ecal", CERN CMS TN/96-057, 1996.
 - [2.2] http://www.cern.ch/CERN/Divisions/TIS/safdoc/instr_en.html